

COMMUNITY GUIDE

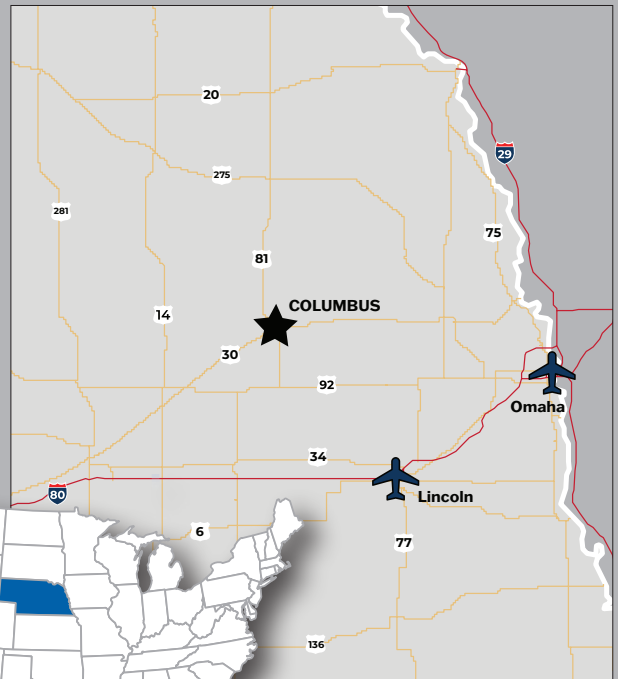
Columbus

NEBRASKA



The Community Building, home of the Public Library, Columbus Area Arts Council, Columbus Area Children's Museum and City Hall.

*Hard at work
building our future!*

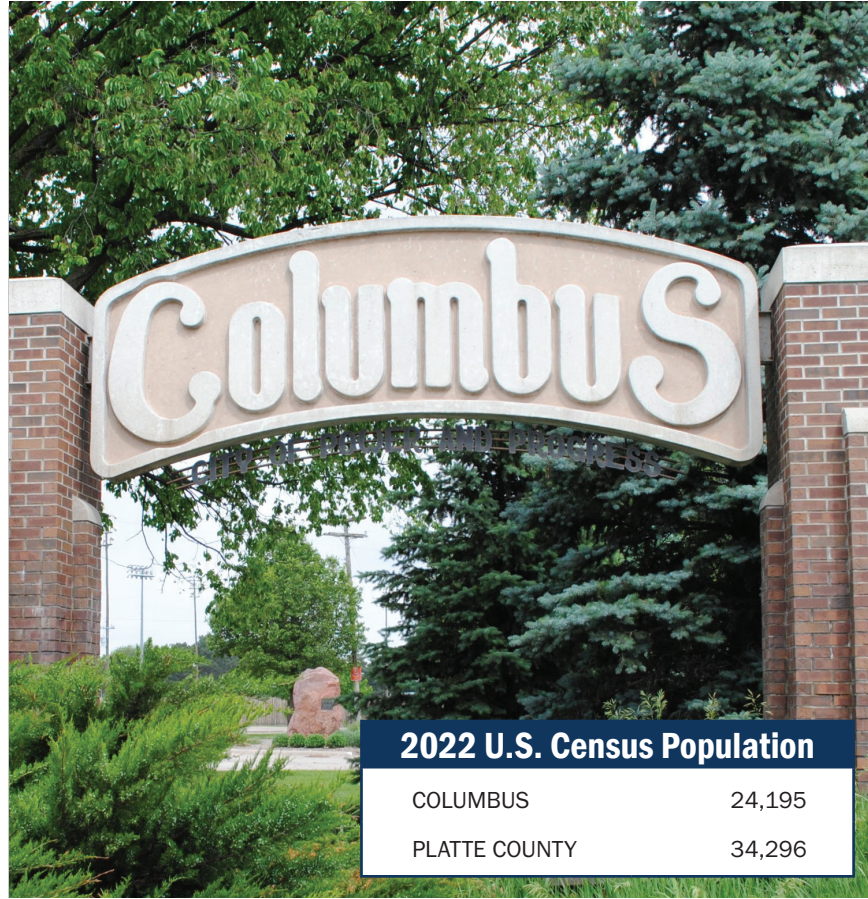


www.loup.com
www.columbusne.us
www.thecolumbuspage.com

NEBRASKA
ECONOMIC DEVELOPMENT
CERTIFIED COMMUNITY

▶▶ Inside the guide

- 3** About Columbus
- 4** Geography/Transportation
- 6** Economic Development/Labor
- 10** Communications
- 11** Utilities
- 15** Tax Structure
- 16** Local Government, Law Enforcement & Public Safety
- 18** Education
- 22** Quality Of Life
- 32** Housing
- 33** Climate
- 34** Agriculture



The following pages contain basic information about Columbus, Nebraska. This information was compiled by the Loup Power District, City of Columbus, Columbus Area Chamber of Commerce, and Nebraska Public Power District in order to promote community development and quality of life.

CONTACTS

Columbus Economic Council

Todd Duren, Co-Chair
 Loup Power District Vice President of
 Corporate Services
 Columbus, Nebraska
 Phone: 402-562-5720
 Cell: 402-564-3386
 Email: tduren@loup.com

City of Columbus

Tara Vasicek
 City Administrator
 Columbus, Nebraska
 Phone: 402-562-4233
 Email: tara.vasicek@columbusne.us

Columbus Area Chamber of Commerce

Dawson Brunswick
 President
 Columbus, Nebraska
 Phone: 402-564-2769
 Cell: 402-910-2313
 Email: dbrunswick@megavision.com

Nebraska Public Power District

Nicole Sedlacek, CEcD
 Economic Development Manager
 O'Neill, Nebraska
 Office: 402-563-5534
 Cell: 402-340-0190
 Email: njsedla@nppd.com
 sites.nppd.com



Rendering of the Columbus Fieldhouse

About Columbus, Nebraska

If you like moving forward, you've come to the right place! Columbus, Nebraska, is hard at work building our future. Physical structures are being built from one end of Columbus to the other....in fact, more construction is going on right now than at any other time in our history! That success story includes a new city hall, library, fieldhouse, ongoing downtown revitalization, and new housing projects.

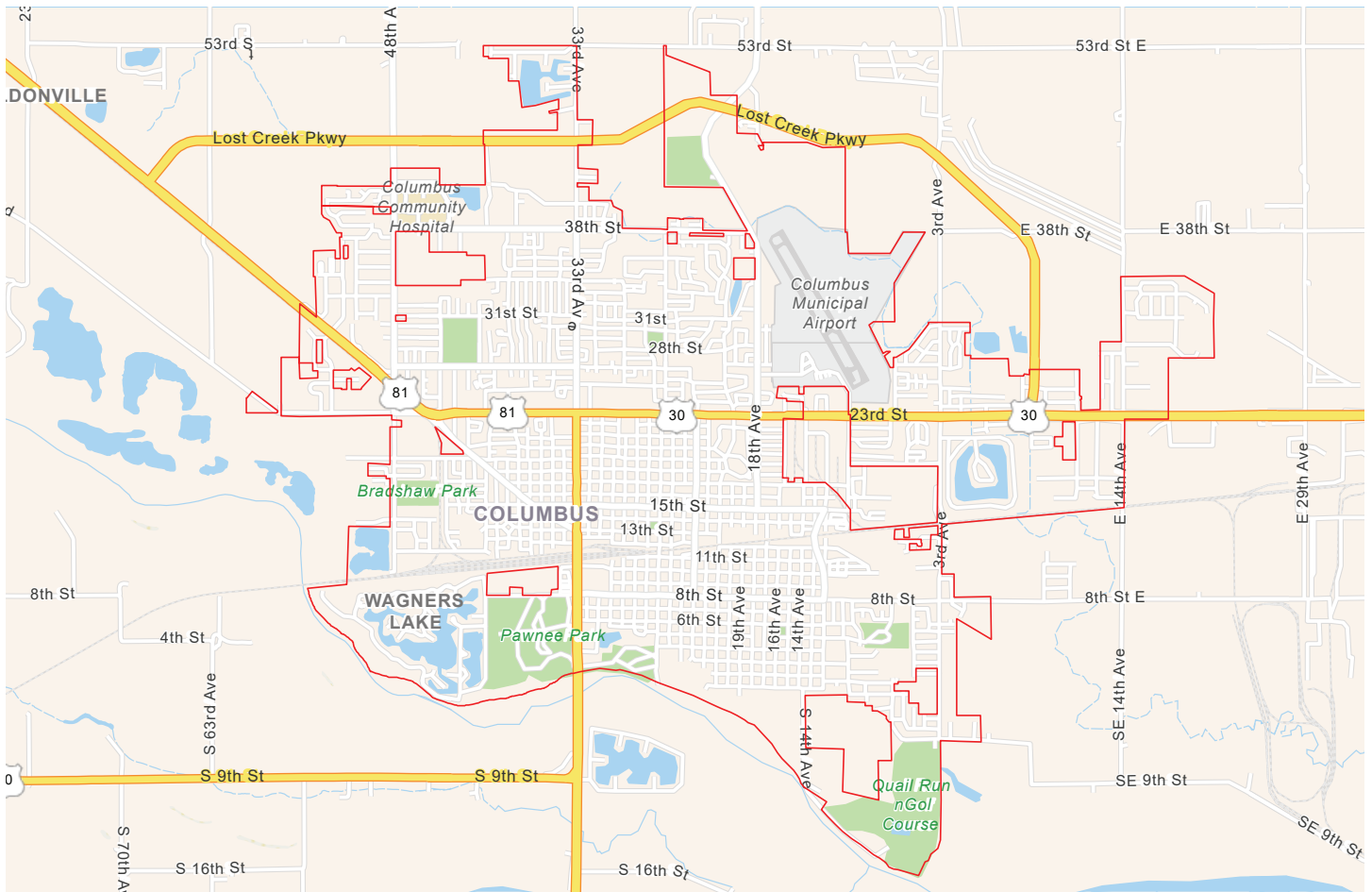
Columbus is home to some 6,000 manufacturing jobs with companies ranging from Fortune 500 to small, homegrown enterprises. We have low unemployment, but have talented people looking for greater opportunities. We are a place that welcomes all who want to show up, go to work, and get things done. If that describes you, then you'll fit right in!

As we commonly say, Columbus is where collaboration lives. If you like working together toward a common goal, then you'll love it here. This spirit of unity is evident every day, in tangible projects like those mentioned above and also when local schools work together, city and county governments collaborate, and public-private partnerships form to improve life for our citizens. It took everyone working together to bring more than 300 new residences into development. Now that's the power of collaboration!

Columbus is proud of what we have to offer and proud that others see it, too. Columbus has been named one of the "Top 100 Best Small Towns" by CNN/Money Magazine twice in the past decade. But we're not resting...in fact, we are building an even better future, and we hope you'll be part of it.

The Columbus Community Building, pictured on the front cover, is a three-story building housing the Public Library, Columbus Area Arts Council, Columbus Area Children's Museum, leased café space, and City Hall. In addition, the project includes an adjacent parking lot and playground area. The site is the former locations of the fire department, senior center and library which is on the north side of 14th Street east of 26th Avenue. The first floor will consist of a main front entry point with access to the library, children's museum and utility office. The second floor consists of the extensions of the library and children's museum and a public art gallery space. The third floor houses a community room, the city council chambers and city hall. The site includes drop-off windows to pay city hall bills, library book return and a privately owned and operated coffee shop.

The Community Building has been intentionally planned and designed to be an active public space that will facilitate community engagement, collaboration and contribute to the revitalization of downtown.



Geography & Transportation

Location

Columbus, the county seat of Platte County, is located in the east-central part of Nebraska near the confluence of the Platte and Loup Rivers. U.S. Highways 30 and 81 intersect in the city. Columbus is 75 miles northwest of Lincoln and 85 miles west of Omaha. The Columbus Micropolitan Statistical Area consists of Platte County.

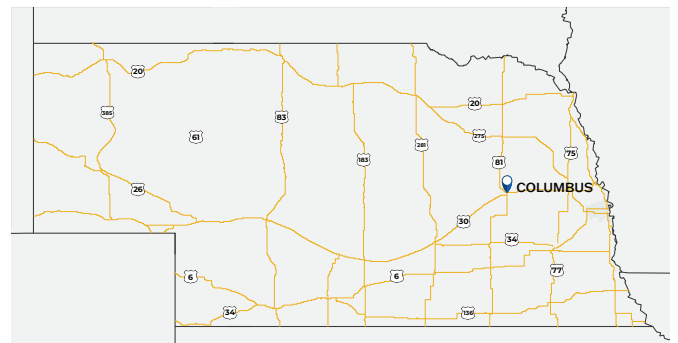
Elevation

Columbus is 1,447 feet above sea level.

Highways

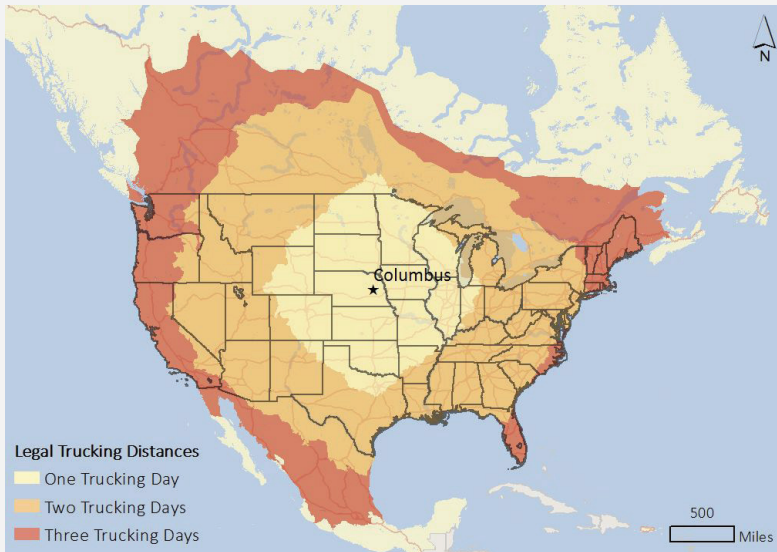
East-west U.S. Highway 30 and north-south U.S. Highway 81 intersect in Columbus. Truck restrictions apply for off streets excluding deliveries. Interstate 80 is 54 miles south and Interstate 29 is 85 miles east of Columbus.

U.S. Highway 81 is four-lane from seven miles south of Columbus to north of Norfolk. U.S. Highway 30 is four-lane from Columbus to the Colfax/Dodge County line. The Nebraska Department of Roads (NDOR) is continuing improvements between Rogers and Fremont in Dodge County. This portion of U.S. Highway 30 is being rerouted 1.5 to 2 miles north of the existing U.S. Highway 30, by-passing North Bend and Ames, and will connect with U.S. Highway 77 interchange just north of Fremont. This will complete the four-lane expressway from Columbus to Omaha and Interstate 29 (I-29).



Bus Lines

Express Arrow is a bus carrier with a stop at Sapp Bros in Columbus. It runs Monday-Friday and departs Columbus to the bus terminal in Omaha at 11:40 a.m. It returns to Columbus from Omaha at 7:30 a.m. and arrives in Columbus at 9:20 a.m. Tickets can be purchased online at expressarrow.com or by calling 877-779-2999.



Trucklines

More than 13,500 licensed motor carriers with worldwide connections are based in Nebraska and serve businesses throughout North America.

Source: Nebraska Department of Economic Development. Legal Trucking Distances from Columbus, Nebraska [maps], 2016. Generated by Andrew Eckerson using ESRI Business Analyst Desktop.

Columbus Area Transit

Columbus Area Transit (CAT) is a call-based system that provides public transportation to all regardless of their race, ethnicity, age, sex, or disability. Service is scheduled on a first-call first-served basis within the Columbus city limits. Patrons complete a transportation demographic and acquire punch cards through the CAT office. For more information, call 402-564-9293.

Rail

The Nebraska Central Railroad Company (NCRC), is a 340-mile network composed of five former Union Pacific Railroad branch lines and one former BNSF Railway branch line. Trackage rights include rights to 70 miles of UPRR main line between North Platte, Neb. and Omaha, Neb. NCRC, through its connection with Union Pacific (at Columbus, Central City and Grand Island) and BNSF (at David City), is an integral part of grain shipments in the region. NCRC serves approximately 20 unit loading facilities, and annually handles more than 250 unit trains with distributed power units (DPU) and run through power (RTP) agreements, more than any other short line interchanging with the UPRR.

Amtrak provides Lincoln, 75 miles southeast of Columbus, with rail

passenger service throughout the United States. Additional Nebraska Amtrak stations are located in Hastings, Holdrege, McCook, and Omaha. For more information, visit amtrak.com.

Air

The Columbus Municipal Airport supports several aviation-related businesses. The primary business at the airport is Avcraft, which is contracted by the City of Columbus as the Fixed Base Operator (FBO).

Avcraft provides fuel sales via truck delivery of both Avgas and Jet A fuels. Avcraft provides most FBO services, including flight planning and aircraft maintenance, while also offering flight instruction. Aircraft restoration, aircraft hangers, brokering aircraft, and managing aircraft are also offered by Avcraft.

Avcraft is open Monday through Friday from sunrise to sunset or 7 a.m. to 7 p.m., whichever is longer, and from 7 am to 5 p.m. on weekends. The office number is 402-564-7884.

Call 402-910-5246 to arrange for after-hours service. (A call-out fee applies.) Please call ahead for holiday hours. Visit 100LL.com to view posted fuel prices.

Other businesses include Har-Mor Ag Air Inc., which provides aerial spraying, and Muhle Aviation Works and Best Air provide aircraft restoration.

The airport also provides a conference room from 7 a.m. to 5 p.m. Contact the manager's office to make an after-hours appointment. There is also an after-hour's Pilot Lounge for transient pilots that need to get out of the weather. Our Pilot Lounge includes local weather information, coffee, refrigerator and stove, and restrooms, and is located in the Administration Building.

Nearest Commercial Air Service:

- Central Nebraska Regional Airport, Grand Island, Nebraska
64 miles, 70 minutes
- Lincoln Airport, Lincoln, Nebraska
75 miles, 75 minutes
- Eppley Airfield, Omaha, Nebraska
88 miles, 95 minutes

Pipeline

NuStar LP operates a terminal seven miles east of Columbus.

Economic Development

Economic development activities for the Columbus region are carried out by the Columbus Economic Council (CEC), a committee of the Columbus Area Chamber of Commerce. The committee has 40 members representing major manufacturers, bank presidents, and city and county officials.

CEC provides three primary services (recruitment, retention, and technical assistance) to new and existing Columbus companies. The focus is primarily on industrial development with an emphasis on manufacturing, technology, back office operations, and food processing. Several sites are available in the industrial park and typically one or more vacant buildings are ready for immediate occupancy. Visit sites.nppd.com for more information about available sites and buildings in Columbus.

Columbus has an Economic Development Incentive Plan (LB 840 Plan) to assist businesses in start-up and/or expansion projects.

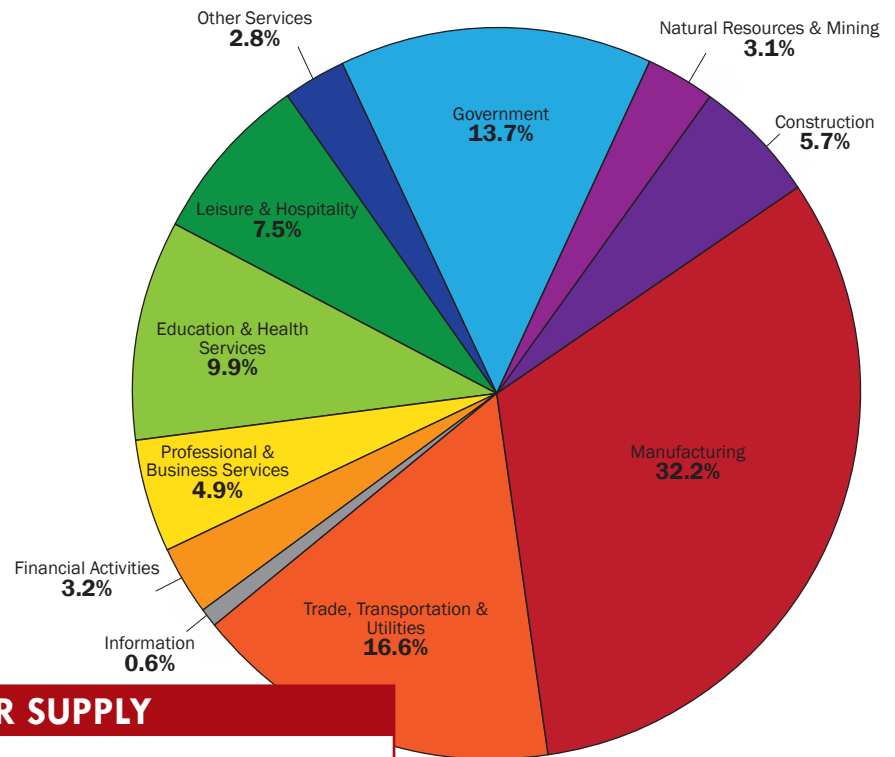


Labor

Workforce

The Nebraska Department of Labor serves employers and job seekers across Nebraska through its “One Stop Career Centers” located across the state. Services for employers include employee recruitment and screening, posting job openings, tax credit information, and labor market and labor law information. Job seekers can find a full array of employment and training related services including on site services provided by a network of mandatory Workforce Investment Act partners.

To learn more about these and other services, visit networks.nebraska.gov.



ANNUAL AVERAGE 2022 LABOR SUPPLY

*Contiguous Nebraska counties include Boone, Butler, Colfax, Madison, Merrick, Nance, Polk and Stanton counties.

	PLATTE COUNTY & CONTIGUOUS*	PLATTE COUNTY
NON-FARM WAGE & SALARY WORKERS	57,106	19,617
TOTAL EMPLOYMENT	63,511	18,208
LABOR FORCE POPULATION	64,841	18,600

NOTE: Does not include estimated number of homemakers, seasonal and part-time workers, and workers who would shift from low-paying jobs who could be expected to work for industry.

Source: U.S. Bureau of Labor Statistics, 2023

Unionization

Nebraska has a right to work provision in its constitution. In 2021, 6.8 percent of Nebraska’s wage and salary workers were members of labor unions compared to a national figure of 10.3 percent.

Local Labor Unions

Central Community College–Columbus

- Nebraska Education Association

City of Columbus (police and fire only)

- International Association of Fire Fighters
- Fraternal Order of Police

Columbus Public Schools (teachers only)

- Nebraska State Education Association

CommonWealth Electric

- International Brotherhood of Electrical Workers

Educational Service Unit 7 (ESU 7) (teachers only)

- Nebraska State Education Association

Lakeview Community Schools (certified staff only)

- Lakeview Education Association

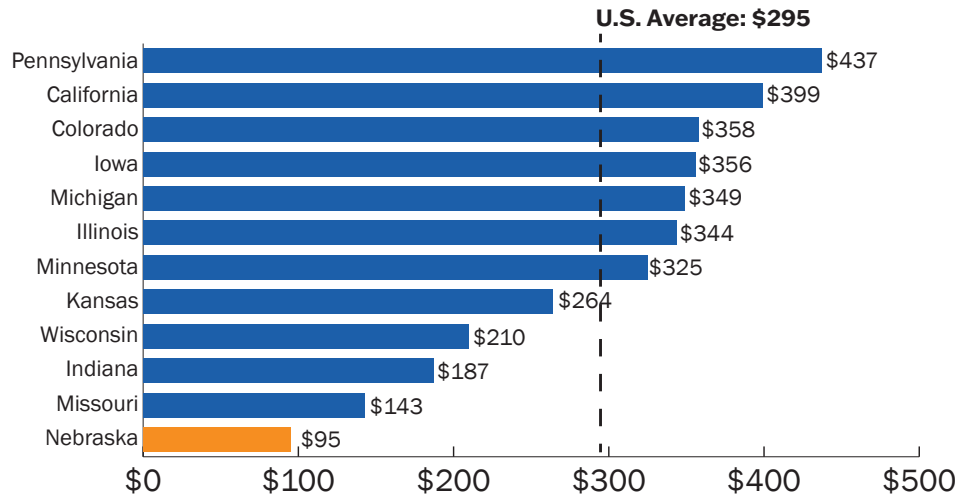
State of Nebraska - Platte County (hourly employees only)

- National Association of Public Employees
- American Federation of State, County, and Municipal Employees

U.S. Post Office

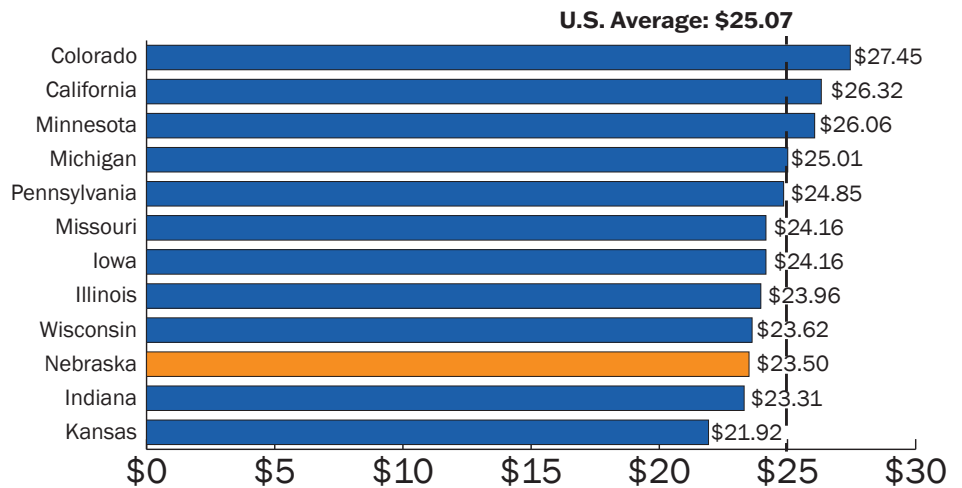
- American Postal Workers Union
- National Association of Letter Carriers
- National Rural Letter Carriers Association

Average Annual Unemployment Insurance Contribution per Employee, 2021



Source: U.S. Bureau of Labor Statistics, 2023

Average Hourly Earnings for Production Workers, 2022



Source: U.S. Bureau of Labor Statistics, 2023

UNEMPLOYMENT RATE: 2022 AVERAGE

	PERCENT
PLATTE COUNTY	2.1%
NEBRASKA	2.7%
UNITED STATES	3.6%

Source: U.S. Bureau of Labor Statistics, 2023

COLUMBUS'S TOP 10 MANUFACTURERS

EMPLOYERS	PRODUCT OR SERVICE	EMPLOYEES
BD Medical: Medication Delivery Solutions	Hypodermic needles and syringes	1,097
BD Medical: Pharmaceutical Systems North American Molding Center	Glass syringes	869 88
Vishay Dale Electronics	Electronic components	678
Behlen Mfg.	Steel buildings, agricultural and livestock equipment	665
CAMACO, LLC	Automotive seats and frames	480
ADM Corn Processing	Wet and dry corn milling, cornstarch, fructose, ethanol	401
Cargill Protein	Cooked meats (beef, pork, chicken, turkey)	332
FLEXcon	Pressure sensitive plastic film, decals, package labels, holograms and adhesive nameplates	152
Columbus Hydraulics Co., Inc.	Hydraulic and pneumatic cylinders	149
Valmont Newmark	Steel transmission structures for utility industry	130

COLUMBUS'S TOP 10 NON-MANUFACTURERS

EMPLOYERS	PRODUCT OR SERVICE	EMPLOYEES
Pillen Family Farms / DNA Genetics	Agribusiness	914
Columbus Community Hospital	Medical	729
Columbus Public Schools	Education	595
Central Community College	Education	536
Nebraska Public Power District	Electric Utility	352
Lakeview Community Schools	Education	183
City of Columbus	Government	180
Platte County	Government	175
State of Nebraska	Government	127
Loup Power District	Electric Utility	121

WAGE SAMPLING

Hourly wages rates for various occupations, Northeast Region, Nebraska

JOB TITLE	10TH PERCENTILE	50TH PERCENTILE	90TH PERCENTILE
Accountants and Auditors	\$19.49	\$31.35	\$50.64
Computer Programmers	\$31.72	\$51.76	\$52.68
Customer Service Representatives	\$11.86	\$16.43	\$24.69
Cutting, Punching, and Press Machine Setters/Operators	\$12.54	\$19.59	\$24.99
Electricians	\$15.00	\$24.10	\$39.16
Heavy and Tractor-Trailer Truck Drivers	\$15.91	\$25.18	\$40.49
Laborers and Freight, Stock, and Material Movers, Hand	\$15.49	\$19.67	\$20.45
Machinists	\$15.62	\$19.81	\$30.00
Miscellaneous Assemblers and Fabricators	\$15.02	\$19.48	\$25.32
Office Clerks, General	\$11.24	\$15.45	\$23.93
Registered Nurses	\$24.82	\$31.76	\$40.72
Retail Salespersons	\$11.72	\$14.72	\$19.64
Secretaries and Administrative Assistants, Except Legal, Medical, and Executive	\$14.25	\$18.82	\$24.18
Tool and Die Makers	\$19.83	\$25.13	\$36.12
Welders, Cutters, Solderers, and Brazers	\$19.23	\$20.29	\$25.69
Welding, Soldering, and Brazing Machine Setters/Operators	\$18.93	\$19.59	\$24.94

Source: Nebraska Workforce Development, Occupational Employment, Program, Fourth Quarter 2022



Behlen Mfg.



Vishay Dale Electronics



CAMACO, LLC



ADM Corn Processing



Cargill Value Added Meats



FLEXcon



Valmont



Columbus Hydraulics Co., Inc.



U.S. Post Office

Communications

Telecommunications & Internet Providers

- Applied Connectivity Technologies
appliedconnective.com
- Allo Communications
allocalcommunications.com
- Frontier Communications
frontier.com
- Great Plains Communications
gpc.com
- Spectrum
spectrum.com
- Vyve Broadband
vyvebroadband.com
- Most major cell and television carriers available in Columbus area.

Post Office & Package Delivery Service

The U.S. Postal Service in Columbus provides house-to-house delivery service and employs 50 people with 12 city routes and 12 rural routes. More than 13,000 mailboxes are served in the area. Postal services include passport pictures and passports.

Federal Express, United Parcel Service, U.S. Postal Service, Amazon and Speedy Delivery Service provide package delivery services in the Columbus area.

Newspapers

The *Columbus Telegram*, the local daily newspaper, has nearly 11,600 viewers. The *Columbus Telegram* prints 16,000 copies of the weekly Columbus Area Choice Shopper. The Columbus Telegram website reaches as many as 133,000 visitors monthly with more than 903,000 page views per month.

Other newspapers delivered locally include *West Point News*, *Sioux City Journal*, *Omaha World-Herald*, *Lincoln Journal Star*, *Grand Island Independent*, *Humphrey Democrat*, *Schuyler Sun* and *Elkhorn Valley Shopper*.

Radio Stations

- KTTT-AM, 1500 KHz, Columbus
- KJSK-AM, 900 KHz, Columbus
- KGKD-FM 90.5 FM, Columbus
- KTLX-FM 91.3, Columbus
- KKOT-FM, 93.5 MHz, Columbus
- KLIR-FM, 101.1 MHz, Columbus
- KZEN-FM, 100.3 MHz, Columbus

Television/Local News Stations

- News Channel Nebraska
- KMTV, Channel 3, Omaha
- WOWT, Channel 6, Omaha
- KETV, Channel 7, Omaha
- KOLN/KGIN, Channel 10/11, Lincoln/Grand Island
- KLKN, Channel 8, Lincoln
- KPTM 42, Omaha
- RFD TV, Omaha

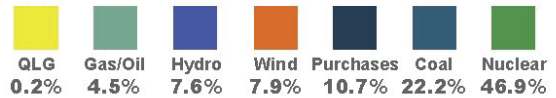
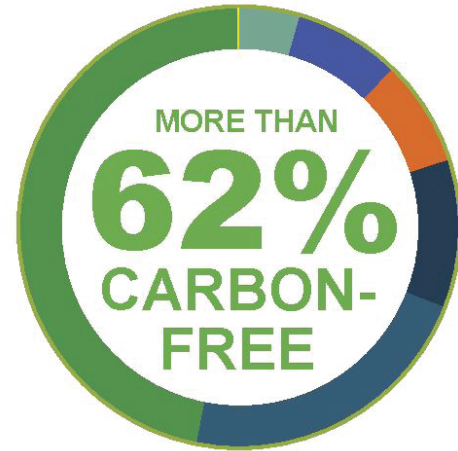
Utilities

Nebraska Highlights

Energy costs are often a considerable part of any business' operational budget. These costs can vary greatly between states, but in Nebraska (the only state in the nation where all electric utilities are publicly owned) electric costs are passed to consumers at low, cost-of-service rates. As a result, the state offers industrial rates well below the national average. Nebraska electric utilities achieve low rates, in part, because they draw from a balanced and efficient "mix" of generation resources.

NPPD ENERGY GENERATION RESOURCES FOR NEBRASKA CUSTOMERS

2020-2021 Rolling Two-Year Average - Preliminary



*Qualifying Local Generation (QLG) includes renewable energy facilities installed by our wholesale customers and in NPPD retail communities.



Average Retail Price of Energy Costs

Electric

(Cents per Kilowatt Hour 2021)

Natural Gas

(Dollars per Thousand Cubic Feet 2021)

	Residential	Commercial	Industrial	Residential	Commercial	Industrial
U.S. Average	13.72	11.27	7.26	12.18	8.79	5.50
NEBRASKA	10.85	8.85	7.37	9.59	6.69	9.75
California	22.85	19.21	15.14	16.34	12.04	7.13
Colorado	13.13	10.86	8.05	9.1	7.97	7.57
Illinois	13.24	9.70	7.36	10.51	9.1	6.86
Indiana	13.46	11.63	7.38	10.05	7.78	7.08
Iowa	12.75	10.17	6.67	10.2	8.46	5.22
Kansas	12.93	10.50	7.38	11.11	9.08	10.13
Massachusetts	22.91	17.16	15.31	16.02	12.05	6.70
Michigan	17.53	12.27	7.77	9.21	7.87	5.47
Minnesota	13.42	11.16	8.43	9.4	7.79	6.53
Missouri	11.49	9.20	7.10	10.81	7.7	5.36
Nevada	11.50	7.77	6.14	9.72	6.56	5.59
New Jersey	16.37	12.81	10.79	10.26	10.14	9.42
New York	19.44	16.14	6.33	13.78	7.91	8.38
Ohio	12.78	9.77	6.61	11.08	6.64	8.00
Pennsylvania	13.79	8.92	6.58	12.01	9.59	8.51
Wisconsin	14.55	10.92	7.66	9.74	7.88	6.98

Source: U.S. Energy Information Administration

Electricity

Loup Power District (loup.com), a wholesale power customer of Nebraska Public Power District (nppd.com), provides electric service to Boone, Colfax, Nance, and Platte Counties, and a portion of Madison County. Loup Power District provides wholesale service to the community of Schuyler. Loup Power District, Nebraska Public Power District, Cornhusker Public Power District (cornhusker-power.com), and the Nebraska G & T (negt.coop) are headquartered in Columbus.

The Columbus area receives power from three sources: (1) the Columbus Hydro substation, located one-mile northeast of Columbus and adjacent to a Loup 45 MW hydroelectric plant, which is tied to the statewide transmission grid system with seven 115 kV lines; (2) Columbus West 230-34.5 kV substation serves the west side of Columbus; and (3) Columbus East 345/230/115-34.5 kV substation serves the east side of Columbus and the east industrial area.

One 37 MVA and five 56 MVA transformers feed into eleven 34.5 kV subtransmission lines, which form a 34.5 kV grid around and through the city and adjacent industrial areas. The distribution system voltage throughout Columbus and the surrounding area is 12,470 volts.

Creston Ridge Wind Farm, a seven-turbine wind facility located between Creston and Columbus, began operation in December of 2015 (four units) and June 2017 (three units). Creston Ridge I consists of four 1.7 MW turbines and Creston Ridge II consists of three 2.3 MW turbines with an installed capacity of 13.7 MW. It is owned and operated by Bluestem Energy Solutions based in Omaha. Bluestem sells the energy generated by the turbines to Loup Power District.

Base Electric Rates—Loup Power District (effective 2/1/23)

Summer bills run from June 15 – October 14.

Winter bills run from October 15 – June 14.

All rates are subject to application of a retail Production Cost Adjustment (PCA). All minimum billings include the customer charge.

Residential Service (LR1) Customer Charge: \$17.00/month		
SUMMER	WINTER	
\$0.1110	\$0.0850	per kWh for the first 600 kWh used per month
\$0.0885	\$0.0825	per kWh for all additional use
Minimum Bill: \$17.00/month.		

General Service (LG1) (Single Phase) Customer Charge: \$25.00/month		
SUMMER	WINTER	
\$0.1070	\$0.1015	per kWh for the first 600 kWh used per monthly billing period
\$0.1070	\$0.1015	per kWh for the next 600 kWh used per monthly billing period
\$0.0970	\$0.0940	per kWh for all additional use
Minimum Bill: \$25.00 per month.		

General Service (LG1) (Three Phase) Customer Charge: \$36.00/month		
SUMMER	WINTER	
\$0.0170	\$0.1015	per kWh for the first 1,800 kWh used per monthly billing period
\$0.1070	\$0.1015	per kWh for the next 1,200 kWh used per monthly billing period
\$0.0970	\$0.0940	per kWh for all additional use
Minimum Bill: \$36.00 per month.		

Large Light & Power Service (LP) (distribution delivery from lines of 12,470 volts or less and demand less than 300 kW) Customer Charge: \$450.00/mo

DEMAND CHARGE		
SUMMER	WINTER	
\$17.50	\$12.50	per kW per month of maximum or billing demand
PLUS AN ENERGY CHARGE OF:		
\$0.0480	\$0.0425	per kWh
Minimum Bill: \$450.00 per month.		
Maximum Bill: Summer: The maximum cost per kWh after all adjustments or discounts will be \$0.2363		
Winter: The maximum cost per kWh after all adjustments or discounts will be \$0.2154.		

Large Light & Power Service (LP3) (distribution delivery from lines of 12,470 volts or less and demand greater than 300 kW) Customer Charge: \$750.00/mo

DEMAND CHARGE		
SUMMER	WINTER	
\$17.25	\$13.50	per kW per month of on-peak maximum or billing demand
\$5.25	\$4.50	per kW per month of off-peak maximum billing demand, which is above the on-peak demand
PLUS AN ENERGY CHARGE OF:		
\$0.0500	\$0.0460	per kWh (on-peak)
\$0.0425	\$0.0400	per kWh (off-peak)
Minimum Bill: \$750.00 per month.		
Maximum Bill: Summer: The maximum cost per kWh after all adjustments or discounts will be \$0.2403.		
Winter: The maximum cost per kWh after all adjustments or discounts will be \$0.2188.		

Industrial Rates, Subtransmission Delivery are also available.

Prospective customers should contact Loup Power District President and CEO Neal D. Suess at 402-564-3171, nsuess@loup.com, or visit loup.com, for further information regarding electric rates and service.

Cornhusker Public Power District provides service to rural areas in six counties surrounding Columbus. For information regarding electrical services in the Cornhusker Public Power District service area, contact CEO/General Manager, Clay Gibbs, at 402-564-2821, clayg@cppd.us or visit cornhusker-power.com.

Natural Gas

Black Hills Energy, a subsidiary of Black Hills Corp., serves 300,000 natural gas customers in 319 Nebraska communities. Black Hills Energy's Nebraska headquarters is located in Lincoln.

Black Hills Energy is the distributor of natural gas in Columbus. The transmission provider is Northern Natural Gas. Natural gas in Columbus is provided by 4, 6, and 10-inch lines with an average value of 1,000 Btu per cubic foot, and is available for residential, commercial, and industrial customers for base and peak use on a firm basis. Interruptible service is available for customers with alternate fuel capability.

Rates vary slightly due to seasonal and commodity price fluctuation. Current rates for the commercial/light industrial class customer, can be found at blackhillsenergy.com.

Contact Black Hills Energy at 888-890-5554 for information regarding gas rates and services.



Loup Power House

Other Fuels

LP Gas

LP gas is available for residential, commercial, and industrial uses from Central Valley Ag, Ferrellgas, Matheson, Sapp Bros., T-Bone Truck Stop and numerous retailers in Columbus.

Oil

Oil is available in Columbus for residential, commercial, and industrial uses from Sapp Bros. and numerous retailers in Columbus.

Solid Waste Disposal

The city operates a solid waste transfer station collecting and handling municipal solid waste (MSW) received from private waste haulers, residences, and contractors. The city transfers these MSW to the Northeast Nebraska Solid Waste Coalition landfill in Stanton, Nebraska, 40 miles northeast of Columbus. A free drop off yard waste and lawn clippings site is provided to city residences. Wood waste and brush is chipped on-site and available to the public free of charge.

Water

The municipal water system in Columbus is supplied by two water treatment plants (south and north) that are fed from 12 active wells, which have an average depth of 125 feet. The system, serving the entire city, has a combined pumping capacity of 10,000 gallons per minute and an overhead storage capacity of 5.1 million gallons and 0.8 million gallons underground. The average daily demand is 5.0 million gallons, and the historic peak daily demand is 14.2 million gallons. The system has a maximum capacity of 14.4 million gallons per day and the city's wells can produce up to 10,000 gallons per minute. The static pressure is 55 pounds per square inch and the residual pressure is 50 pounds per square inch. The city has approximately 188 miles of water main line ranging in size from 6 inches to 30 inches in diameter.

The water table has not changed significantly in the past ten years. The quality of water does not necessitate a water treatment plant.



Transfer Station



Water & Sewer Department

Water Rates *effective 10/1/18*

A \$50.00 connection fee is charged for inside the city limits and a \$110.00 connection fee is charged for outside of the city limits. Additional fees will be charged in areas that have no previous service.

Domestic and Non-Domestic Users <i>per 1,000 gallons</i>		
USES	INSIDE CITY LIMITS	OUTSIDE CITY LIMITS
Residential	\$1.35	\$2.68
Commercial	\$1.21	\$2.63
Industrial	\$1.19	\$2.47

Plus a Monthly Service Charge (based on meter size)

METER SIZE	ALL CUSTOMERS
3/4"	\$ 6.78
1"	\$ 6.78
1-1/2"	\$ 20.35
2"	\$ 33.92
3"	\$ 67.85
4"	\$101.77
6"	\$203.54
8"	\$339.24
10"	\$508.86
12"	\$949.86

Sewerage

Columbus has a municipal sanitary sewer system and a storm sewer system. The gravity flow sanitary sewer system consists of 167 miles of sanitary sewers ranging in size from 6 inches to 30 inches in diameter. The sanitary collection system utilizes 23 lift stations.

Sewer-Use Charges

effective 10/1/21

A \$50.00 connection fee is charged within city limits and \$110.00 connection fee is charged outside of city limits. Additional fees will be charged in areas that have no previous service.

Domestic and Non-Domestic Users <i>per 1,000 gallons</i>		
USES	INSIDE CITY LIMITS	OUTSIDE CITY LIMITS
Residential	\$5.13	\$7.37
Commercial	\$5.13	\$7.37
Industrial	\$5.13	\$7.37

Plus a Monthly Service Charge (based on meter size)

METER SIZE	ALL CUSTOMERS
3/4"	\$ 9.41
1"	\$ 9.41
1-1/2"	\$ 28.23
2"	\$ 47.05
3"	\$ 94.09
4"	\$141.14
6"	\$282.28
8"	\$470.47
10"	\$705.71
12"	\$1,317.33

The city utilizes an activated sludge treatment plant, with extended aeration facilities, with the ability to treat domestic and industrial waste. An industrial pre-treatment program is in place. The wastewater treatment plant was initially built in 1967, with updates in 1989 and 2003. In 2015, treatment capacity was added to various processes. In 2016, the headworks facilities were upgraded, and in 2018–2019 new blower, ESR, and digester facilities were upgraded.

The wastewater treatment plant has a daily capacity of 5,200,000 gallons per day and an average daily flow of 3,800,000 gallons per day.

Recycling

Private contractors handle recycling options within the community, along with several schools and churches.

Alter Metal Recycling accepts: aluminum cans, scrap, steel cans, copper, nickel, lead, brass, auto batteries and large household appliances. Plastic grocery bags are accepted at HyVee, WalMart, JC Penny, Goodwill and Super Saver.

Green Fiber accepts phone books, office paper, newspapers, cereal and tissue boxes, cardboard, pop and beer boxes, and magazines.

Cell phones can be recycled at the Keep Columbus Beautiful office, Center for Survivors, and at US Cellular.

Hearing aids are recycled by the Columbus Sertoma Club. Glasses or eyewear is recycled by the Columbus Noon Lions. Drop off locations are the Columbus Public Library, Columbus Community Center, Federated Church, or call 402-564-2769.

Mercury is accepted at the Keep Columbus Beautiful Office.

Unbroken Compact fluorescent bulbs are accepted at Loup Public Power District office and Keep Columbus Beautiful Office.

Tax Structure

Nebraska Highlights

- Nebraska assesses income tax based upon the amount of federal taxable income
- No state property tax
- No inventory tax
- No sales tax on:
 - raw materials when used as ingredients or component parts in manufacturing operations
 - sales of energy for processing or manufacturing purposes
 - water used exclusively in manufacturing and processing
 - qualified agricultural machinery and equipment
 - manufacturing machinery, equipment, and related services
- Sales and use tax refunds are available on qualifying air and water pollution control equipment
- Sales and use tax refunds are available on property qualifying for certain investment incentives

The Nebraska State Government is financed by an individual income tax, corporate income tax, 5.5 percent sales and use tax, corporate occupation

tax, and selective excise taxes (liquor, tobacco, motor fuels, etc.). Local governments are financed primarily by property taxes, although some cities and counties collect a local option sales tax of between 0.5 and 2.0 percent.

Property taxes are levied against real and personal property by local political subdivisions such as counties, cities, school districts, fire districts, etc., to provide for local services. All real property except agricultural land is assessed at actual or market value. Agricultural land is assessed at 75 percent of actual value. Personal property is assessed at net book value. Tax rates are expressed in dollars and cents for each \$100 of actual value.

Market value is determined by each county assessor through professionally accepted mass appraisal methods, which include, but are not limited to:

- Comparison with sales of real property of known or recognized value, taking into account location, zoning, current

functional use, and other statutory guidelines (sales comparison approach)

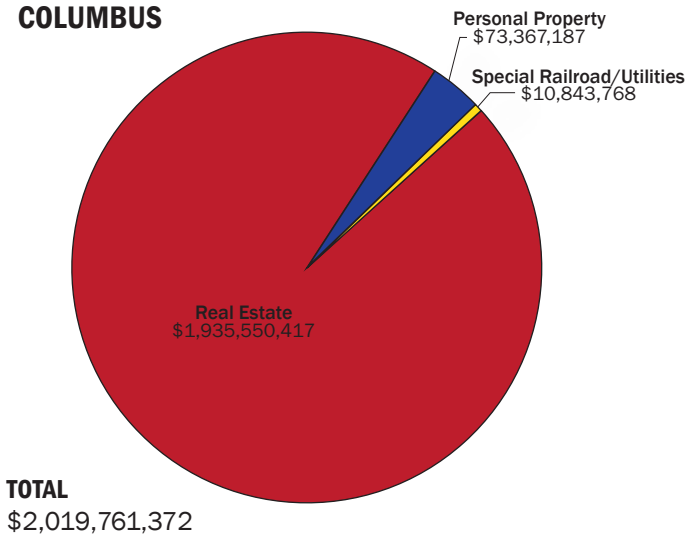
- Earning capacity of the real property (income approach)
- Cost less depreciation (cost approach)

Nebraska Tax Incentives

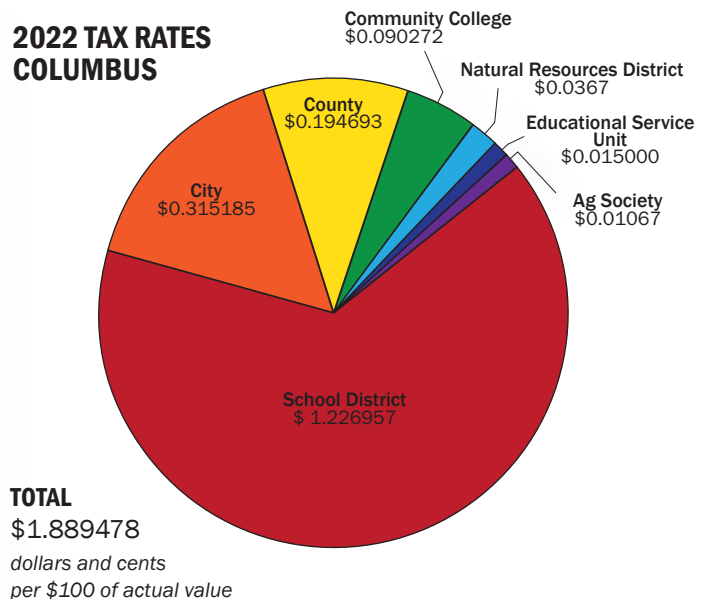
Nebraska's performance-based tax incentive programs demonstrate the state's commitment to creating a favorable business environment for your business expansion or location.

Known as the "ImagiNE Nebraska Act," this multi-tiered program provides qualifying businesses with employee payment credits, investment credits, sales and use tax refunds, and personal and property tax exemptions. Qualified companies, large and small can take advantage of these benefits. For more information on the qualifications and potential benefits available to your company, contact the Nebraska Department of Economic Development at 800-426-6505 or visit opportunity.nebraska.gov.

2022 ACTUAL VALUATION COLUMBUS



2022 TAX RATES COLUMBUS



Source: City of Columbus



Columbus Fire Station #1

Local Government

Columbus, a first-class city, has a mayor-council form of government with a city administrator. The mayor and council members are elected to serve four-year terms and the city administrator is appointed for a four-year term. The budget for the 2022-23 fiscal year was \$126,562,743.

Platte County has 18 townships and is governed by seven county supervisors, who are elected by popular vote for four-year terms. The actual county budget for 2022-23 was \$55,079,399. The county belongs to the Northeast Nebraska Economic Development District along with 16 other counties.

Streets

Columbus has 191 miles of streets; 177 miles are hard-surfaced. Load restrictions for truck traffic are enforced on off streets excluding deliveries. Ninety percent of the streets have curbs and 80 percent have sidewalks.

Building Regulations

The City of Columbus enforces the 2018 International Building Code, 2018 Uniform Plumbing Code, 2018 International Residential Code, 2018 International Fire Code, and 2012 International Property Maintenance Code.

Planning

Columbus has a nine-member planning commission. Members are appointed by the mayor and approved by the city council to serve three-year terms.

The Envision Columbus 2040 Comprehensive Plan was prepared in October 2018 by Kendig Keast Collaborative of Sugar Land, Texas with assistance from Kirkham Michael Consulting Engineers and Iteris, Inc.



Columbus Police Department

Law Enforcement & Public Safety

Columbus Police

The Columbus Police Department employs 37 full-time police officers and six support staff which include clerks, community service technicians, and animal control. The patrol division equipment consists of standard equipment. Regular protection is provided to existing industries within the city limits. The largest portion of the

Industrial Tract is within the jurisdiction of Platte County.

Fire Protection

Fire protection and ambulance services are provided in Columbus by 35 fire-fighters, including both full time and paid reserves. Columbus Fire Department provides Advanced Life Support services and transport. Columbus has



Platte County Detention Center



3rd Avenue Viaduct



33rd Avenue Viaduct



18th Avenue Pedestrian Overpass

three fire stations that serve approximately 100 square miles. The City of Columbus has 1,280 fire hydrants. The fire insurance classification inside the city limits is 4; outside it is 4y. Columbus Fire Department is a member of several mutual aid organizations providing aid to all of Platte County and parts of all surrounding counties. Columbus Fire Department also has an MOU with the Nebraska Emergency Management Agency to provide Hazmat response up to 90 miles from Columbus as requested.

Communications Center

The Columbus-Platte County Joint Communications Center serves as a Public Safety Answering Point (PSAP) for the Platte and Polk County area. All Platte and Polk County 9-1-1 phone calls are routed to the Columbus PSAP. The Communications Center also answers administrative phone lines for the Columbus Police Department, Platte County Sheriff's Office, and Polk County Sheriff's Office. It is staffed 24 hours a day, seven days a week.

The Columbus-Platte County Joint Communications Center is overseen by a committee of two City officials, two County officials, and a member-at-large, and is funded by wired and wireless telephone surcharges and tax dollars.

Sheriff

The Platte County Sheriff's Department is staffed by a sheriff, 17 sworn deputies, and approximately 50 support staff consisting of administrative staff and detention center staff. The department utilizes standard equipment along with dive team equipment, and a boat. The dive team consists of the Sheriff's department personnel and members of the Columbus Police Department. Routine protection to existing industries in the area is provided by the departments.

The Platte County Detention Facility, located in the Columbus East Industrial Site, is designed to hold 144 adult inmates. The facility replaces the old Platte County Jail which was located in the courthouse. The old jail

is still used on a daily basis for persons sentenced from court until they can be picked up and those transported to the courthouse from the Detention Facility for court appearances. The detention center provides a secure holding facility for persons legally confined in Platte County. Platte County currently contracts with several area counties for holding adult inmates. The detention facility books an average of 3,000 inmates a year.

State Patrol

Troop B of the Nebraska State Patrol is headquartered in Norfolk, 46 miles north of Columbus. Nine patrol officers are stationed in Columbus.

2022 CRIME RATES		
Per 1,000 Population	VIOLENT CRIMES	PROPERTY CRIMES
COLUMBUS	0.7	12.1
PLATTE COUNTY	0.9	10.8
NEBRASKA	1.4	10.3

Source: Nebraska Crime Commission, 2023



Columbus High School

Education

Columbus Public School District

School District No. 71-0001 in Columbus (Platte County) and a small portion of both Butler and Polk Counties covers 56.2 square miles. The school had a 2021-22 actual valuation of \$2,302,594,482. The valuation is made up of 99.5 percent of valuation located in Platte County, 0.4 percent in Butler County, and 0.01 percent in Polk County. This Class III school is accredited by the Nebraska Department of Education and Cognia.

The 2020-21 school operating expenses totaled \$46,062,991, with an average cost per pupil of \$12,592.

Columbus Public School's strategic planning process includes academic, social emotional and facility goals. This planning process is intended to guide District decision making in order to

support the mission of CPS "engaging all learners to achieve success." One such project is the Kramer Education Center at the site of the former middle school. This building will house an early childhood education center along with the district central office. This project is being completed with the use of District and Donor funding.

CPS continues to provide College and Career Ready opportunities by offering Dual Credit courses at Columbus High

School, SNAP-ON certification opportunities and the creation of a new career pathway in health care as well as future certification opportunities in early childhood education.

During the 2020-2021 school year 49% of the graduating seniors earned at least one career certification while 30% earned dual college credits.

COLUMBUS PUBLIC SCHOOL DISTRICT 2021-22

	STUDENTS	TEACHER/PUPIL RATIO	COMPUTER/PUPIL RATIO
ELEMENTARY (PRE-K-4)	1,954	1:16	1:1
MIDDLE SCHOOL (5-8)	1,175	1:15	1:1
HIGH SCHOOL (7-12)	1,325	1:17	1:1



Centennial School



North Park School



Emerson School



West Park School



Lost Creek School



Columbus Middle School

Lakeview Community School District

School District No. 71-0005 surrounds the City of Columbus on the north, east, and west sides and includes the town of Platte Center in the northwest section of the district. The land estimated at 300 square miles is located mainly in Platte County with a small portion in Butler and Colfax Counties.

The 2022 valuation of the land was listed at \$1,649,361,717. This Class III school is accredited by the Nebraska Department of Education and AdvancED. The 2021-22 school operating expenses totaled \$11,591,457, with an average cost per pupil of \$13,937.



Lakeview Junior/Senior High School

LAKEVIEW COMMUNITY SCHOOL DISTRICT 2021-22			
	STUDENTS	TEACHER/PUPIL RATIO	COMPUTER/PUPIL RATIO
ELEMENTARY (K-6)	463	1:15	1:1
JUNIOR HIGH SCHOOL (7-8)	138	1:17	1:1
HIGH SCHOOL (7-12)	304	1:13	1:1

Educational Service Unit

Educational Service Unit 7 (ESU 7), headquartered in Columbus, serves seven counties including Platte County. ESU 7 provides leadership and support by delivering customized and innovated services to school districts in its service area, through state legislated core services including staff development, technology, and media; federal and state grant facilitation; special education services; and production and art media services. For more information about ESU 7 visit esu7.org.

Specialized Services

Region V is an employment-first agency that provides desired training and support to promote interdependence and relationships within the community and lessen reliance upon agency services.

NorthStar Services is an employment-first agency with the belief that employment in the community is possible for everyone. NorthStar Services respects the personal opinion and preference of the person receiving services.

Support is provided for people in a variety of options, which may include one or several of the following: community employment, self-employment, or volunteer work in the community.

In addition to employment services, NorthStar offers support for community involvement, residential services, and respite care. These services are individualized to support the person as much or as little as they desire. The support encompasses a wide variety of activities including support to access health care, receive medications per doctor orders, transportation, opportunities for recreation and leisure, support in daily routines, and organized sports.

Nebraska Vocational Rehab is part of a nation-wide program that assists people with disabilities prepare for, obtain, and maintain employment,

while helping businesses recruit, train, and retain employees with disabilities.

Versatile Support Services, Inc. provides diversified support to people with developmental disabilities. Versatile Support Services, Inc. will strive in its vision to provide and maintain the highest degree of quality, dignity, and self-worth to individuals.

Early Head Start and Head Start provide childhood programs, enrollment for pregnant women, infants, toddlers, and children ages 3–5. These programs promote family strengths by recognizing individual values, encouraging team work and creating links in the community through Central Nebraska Community Action Partnership.

Higher Education

Central Community College-Columbus (CCC) offers a variety of degree and certificate options in 14 career and technical programs. It also has academic transfer courses in 25 areas for students who plan to attend CCC for two years before transferring to a four-year college to complete a bachelor's degree.

The campus offers a wide range of campus activities, clubs, intercollegiate athletics, organizations and other opportunities to get involved in campus life.

Additionally, the Columbus campus provides customized training for business and industry, operates an entrepreneurship program for people interested in starting a business and extends classes to several communities in surrounding counties.

Colleges and Universities frequently attended by Columbus High School graduates:

- Central Community College
Columbus
- Northeast Community College
Norfolk, 46 miles away
- Midland University
Fremont, 49 miles away
- Concordia University
Seward, 52 miles away
- Southeast Community College
Milford, 64 miles away
- Wayne State College
Wayne, 72 miles away
- Nebraska Wesleyan University
Southeast Community College
University of Nebraska-Lincoln
Lincoln, 78 miles away
- Bellevue University
Clarkson College
College of St. Mary's
Creighton University
Metropolitan Community College
Nebraska Methodist College
Nebraska Wesleyan University
University of Nebraska Medical Center
*University of Nebraska at Omaha
Omaha, 87 miles away*
- Central Community College
Hastings College
Hastings, 90 miles away
- University of Nebraska at Kearney
Kearney, 115 miles away
- Peru State College
Peru, 148 miles away
- Chadron State College
Chadron, 367 miles away



Scotus Central Catholic High School

PAROCHIAL SCHOOL DISTRICT 2021-22

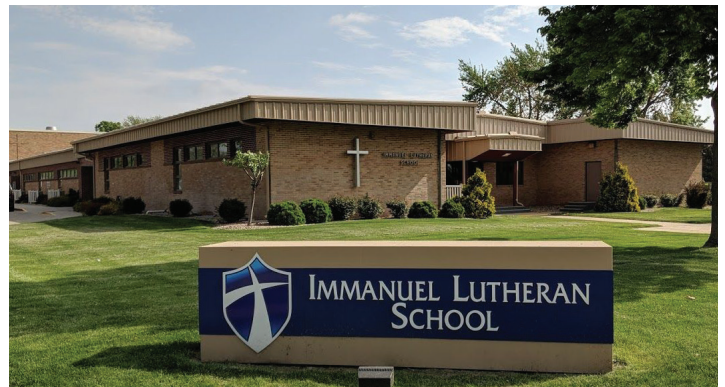
	STUDENTS
ST. ANTHONY (K-6)	91
ST. BONAVENTURE (K-6)	224
ST. ISIDORE (K-6)	290
IMMANUEL LUTHERAN (K-8)	142
COLUMBUS CHRISTIAN (K-8)	21
SCOTUS CENTRAL CATHOLIC (7-12)	373



St. Bonaventure School



St. Isidore School



Immanuel Lutheran School



Columbus Christian School



St. Anthony School



Columbus Community Hospital

Quality of Life

Hospital

The Columbus Community Hospital (CCH) is a community-owned, not-for-profit hospital located on 80 acres in the northwest part of Columbus. The 153,000-square foot hospital is a four-story, prairie-style building with an attached 70,000-square foot, one-story medical office building.

CCH has 50 acute care beds (certified for swing bed), four skilled nursing beds, and 14 ambulatory outpatient beds. CCH's staff of more than 900 employees includes an active medical staff of 48 physicians who represent 14 medical specialists. Visiting physicians offer an additional 15 specialty services.

CCH is constantly improving its services to meet the needs of its community and adapting to changes in the health care field.

In 2012, CCH completed construction on a 30,000-square foot expansion that primarily affects its emergency department. In 2015, CCH collaborated with the YMCA to open the Columbus Wellness Center, and in 2017, CCH built the Child Care Center, which can serve more than 100 children. In 2021, CCH completed a \$35-million renovation project to expand and improve its surgical services department, maternal child health department and other areas of the hospital. The hospital also recently added a dedicated Senior Behavioral Health unit.

CCH is governed by a local board of directors, licensed by the Nebraska State Board of Health, and accredited through the Joint Commission. It is a member of Nebraska Hospital Association (NHA), American Hospital Association (AHA), Voluntary Hospital Association (VHA), and the Heartland Health Alliance (HHA).

CCH strives to provide the highest quality care to its patients by offering the latest technology, state-of-the-art facilities, and a skilled and compassionate staff. Columbus Urgent Care (CUC) is an urgent care facility offering treatment for minor illnesses and injuries. Patient-centered care is provided in a timely manner. Walk-ins are welcome as no appointments are necessary. CUC is in-network with most major insurance companies.



Columbus Community Hospital Child Care Center



Medical Office Building



Columbus Wellness Center



Wiggles & Giggles Therapy for Kids

Clinics

Various specialty clinics are held in Columbus to serve a variety of medical needs in the area. Some of the clinics are provided through outreach programs from other cities.

Columbus Urgent Care (CUC) is an urgent care facility offering treatment for minor illnesses and injuries. Patient-centered care is provided in a timely manner. Walk-ins are welcome as no appointments are necessary. CUC is in-network with most major insurance companies.

East Central District Health Department (ECDHD) provides services such as environmental health, tobacco and youth substance abuse prevention programs, public health emergency response services, health promotion and health education. Each of these services complements other community services in order to increase the quality of life in our service area.

Good Neighbor Community Health Center (GNCHC) is a federally qualified health center that provides quality, affordable, preventative medical, dental, obstetric and gynecology, behavioral health, and reproductive health care to improve the health of our community. GNCHC is a patient-centered medical home which is a team-based model that allows better access to care, improves patient experience and satisfaction, and focuses on quality patient care in order to obtain maximum health outcomes for patients.

Columbus Children's Healthcare (CCH Pediatric Clinic), is a pediatric medical office specializing in the comprehensive primary health services for newborns, babies, toddlers, children, and adolescents through age 21. The mission is to provide and improve the health of all children both local and in the surrounding communities. Currently, there are four Board Certified Pediatricians and three Advanced Practice Clinicians.

Columbus Medical Center (CMC), is a full-service family practice that has been serving the needs of area residents since 1953. The physicians and medical staff are dedicated to providing exceptional, quality medical care for patients of all ages from newborn through geriatrics. CMC is committed to helping achieve a healthy lifestyle and focus on developing long-term relationships and care with patients and their families. Columbus Medical Center provides care for all disease and injury types as well as access to on-site lab and radiology, helping your family live their happiest and healthiest lives.

Columbus Family Practice Associates, P.C. (CFP) was founded in 1976 by Ronald W. Klutman MD. Today the clinic consists of seven Board-Certified Family Physicians, four Advanced Practice Registered Nurses (APRN), one certified diabetic educator/dietician, one social worker, and several clinical staff. The clinic offers health care for the entire family including preventive health, adult, geriatric, adolescent, and pediatric care. CFP is a patient-centered medical home (PCMH) that focuses on being the home for all medical care providing the right care by the right provider at the right place. Our patients also have the option to use our fast track service walk in clinic for acute simple illnesses or injuries. Same-day appointments with physicians are available.



Columbus Urgent Care



East Central District Health Department & Good Neighbor Community Health Center



Columbus Children's Healthcare



Columbus Medical Center



Columbus Family Practice



Columbus Fire Station #2

Financial Institutions

- Bank of the Valley
- Bank of the West
- BankFirst
- Charter West National Bank
- Columbus Bank and Trust Company
- OneUnited Federal Credit Union
- Cornerstone Bank
- Dale Employees Federal Credit Union
- First National Bank
- First Nebraska Bank
- Great Plains State Bank
- First Interstate Bank
- Nebraska Energy Federal Credit Union
- Pinnacle Bank
- US Bank
- Union Bank and Trust Loan Production Office

Churches *Denomination*

- Apostolic
- Assembly of God
- Baptist
- Berean
- Catholic
- Christian Church
- Church of Christ
- Episcopalian
- Evangelical
- Jehovah Witness
- Lutheran
- Methodist
- Latter-Day Saints
- Nondenominational
- Presbyterian
- Seventh-Day Adventist

Library

For 140 years, the Columbus Public Library has been connecting people with education, enrichment, and entertainment. The Columbus Community Building, completed in 2023, honors that legacy and connects Columbus to the future. Designed by the community for the community, this building unifies the Public Library and City Hall and includes community & art spaces, plus leased space for a Children’s Museum and coffee shop.

The library is open seven days a week, over 3,300 hours per year, and provides 24-hour access to Wi-Fi. The library provides both print and electronic resources, and both in-person and online services. The Columbus Public Library’s print and digital library collection contains more than 200,000 unique titles. In addition to traditional library offerings, patrons have access to public use computers, printers, copy machines, fax services, tablets, meeting rooms, makerspace equipment and software, and more. The library provides outreach services and quality

programming for patrons of all ages. These lifelong learning events and services include speakers, performers, and hands-on educational and entertaining programs. The library truly does connect people and ideas. Please visit cplconnect.us or call 402-564-7116 for more information.

Recreation

Columbus is home to numerous parks covering hundreds of acres, as well as golf courses, pools, lakes, and trails.

Pawnee Park, known as “The Picnic Capital of Nebraska,” encompasses approximately 153 acres adjoining the Loup River and Van Berg Golf Course. It offers a living tree museum, rose garden, 1904 Union Pacific steam locomotive, bell tower, Andrew Jackson Higgins Memorial, Pawnee Plunge Water Park, a skate/bike facility (designed for skateboards, in-line skates, and BMX freestyle bikes), family recreation playground areas, sand volleyball courts, fishing, 9-hole disc golf course, horseshoe pits, tennis courts, 3,500-seat stadium with a lighted football field, an eight-lane all weather running track, one large picnic shelter for seating 850 people, and one small shelter seating 250. This park is also the home of the American Legion and high school baseball programs.

Frankfort Square is the venue for countless community events including: Farmer’s Market, Lawn Chairs on the



Pawnee Park Memorial Stadium



Pawnee Plunge Water Park



Pawnee Park Freedom Memorial

Square, Easter Egg Hunt, dance recitals, Memorial Day services, Christmas Stroll, band concerts, National Day of Prayer, Special Olympics Torch Run, Children’s Summer Reading Program, and Sundaes in the Square. The band stand at the square is equipped with a sound system and speakers. Numerous memorial benches provide comfortable seating.

Frontier Park is a 5-acre park located in northeast Columbus and features a playground and swings, restrooms and a concession area. Two large open areas for team practices and other activities are also available.

Sunset Park is a 20-acre park located in northwest Columbus adjacent to the Columbus YMCA and the Columbus Community Hospital. The park features a playground with swings and a shelter with a grill, a trail around the park that connects to other community trails, and off-street parking. Lake Ester is a large



Historic Downtown Columbus

lake stocked by the Nebraska Game and Parks that has a pier for fishing.

Centennial Park, a 20-acre park, located in southeast Columbus, features three baseball/softball diamonds with lights, two tennis courts, a playground area, outdoor archery range, handball court, horseshoe pits, rest rooms, and a concession stand.

Wilderness Park is a 42-acre complex with ten regulation-size soccer fields equipped with restrooms, a concession stand, shelter, and bleachers. American Youth Soccer Organization (AYSO), club, and high school soccer are played here.

Gerrard Park is a 28-acre park featuring a softball /baseball complex (six diamonds) with lights, six tennis courts, playground equipment, shelter area, two restrooms and two concession stands.

Bradshaw Park is an 18-acre softball/football complex featuring four lighted softball/baseball diamonds, and two football fields (one regulation and one eight-man). Youth and high school softball and midget football leagues are scheduled here. There are two concession stands with restrooms and a playground area.

The **Pawnee Plunge Water Park** offers a full day of fun for the entire family with activities from relaxing in the Lazy River and splashing in the zero depth pool, to racing down water slides or surfing the FlowRider. Pawnee Plunge,



Frankfort Square

opened in 2006, is a recreational pool filled with interactive play features and a lily pad walk, a Lazy River for patrons to float on tubes and relax, four large invigorating water slides—the Swirl Bowl, Speed Slides, Curve Slide, and Tube Slide— each slide giving its own unique and exhilarating ride, and a full concessions area. In 2015, the Pawnee Plunge doubled in size. The zero depth pool received a makeover with an interactive play ship for toddlers and a shaded bench area (in the water) where parents and little ones can splash and play in the shade. The new addition added multiple ADA pool entrances/exits; a private room that can be rented to hold meetings or parties; a splash area with water shooting from the pool deck; basketball hoops; and a 25-yard swimming pool with a diving well including a 3-meter diving platform, 1-meter spring board, and a climbing wall. The most popular and talked about addition is the FlowRider. This attraction appeals



Quail Run Golf Course

to a variety of board-sports athletes—surfing, snowboarding, wake boarding, skimboarding, skateboarding—and the learning curve takes time, but is steep as riders’ progress from riding in a prone position on bodyboards, to standing up on flowboards, to doing ollies and flip tricks. Pawnee Plunge is the home to the only FlowRider wave attraction in the state of Nebraska as of 2021.

The **Columbus Aquatic Center** is an eight lane pool, 100 feet by 64 feet, with the depth ranging from 2 1/2 feet to 12 feet. The pool is equipped with ADA compliant steps, ramp, and portable aquatic lift. The 12-foot area has

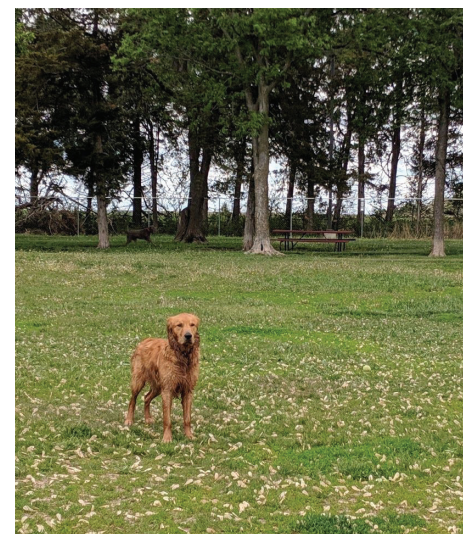
lap swimming lanes, two one-meter diving boards, and a double flume slide. The shallow area has a walking lane, toddler slide, and a basketball hoop. A variety of activities are offered year round to meet the needs of the community including: adult lap swimming and exercises, water aerobics, water Zumba, infant/preschool swim classes, family fun nights, and many other exciting activities. The Aquatic Center offers American Red Cross Swim Lessons, Lifeguard classes, and Water Safety Instructor training. The Aquatic Center is home to the Columbus Discoverers swim team from mid-November through February.

The **Columbus Bark Park** is located south of Lake North on the west side of 18th Avenue next to the Bob Lake Trail. This non-smoking 6.2-acre park is a great place to exercise your dog from sunrise to sunset all year. There are three sections to the park— one for large dogs, small dogs, and an activity area to open soon with toys and agility equipment. The park is equipped with fencing, lighting, benches, signs, water, and pet waste stations. The city’s park department takes care of mowing the grass at the park.

Van Berg Golf Course is nestled in a quaint part of the city along the Loup River, where you will find the



Aquatic Center



Bark Park



Van Berg Golf Course

first golf course built in Columbus. Located in historic Pawnee Park, Van Berg Golf Course was built in 1928 on property donated by Marion Van Berg, holder of horse racing's most career wins by an owner.

The golf course has well-conditioned fairways with small, faster than average greens. The 5,800-yard layout makes Van Berg Golf Course the perfect place for beginners, juniors, super seniors, and anyone else wanting to get in a quick nine. Van Berg Golf Course also plays host to the Monday Men's League as well as the Thursday evening "Girls Night Out" golf league.

Quail Run Golf Course opened in 1991 and has matured into one of the top ranked public golf courses in Nebraska. With its tempting par 5s, deceiving par 3s, and fare but demanding par 4s, the course, carved through towering cottonwoods and nestled along the Loup River and Old Mormon Trail, offers players a unique experience. Quail Run offers five sets of tees which start out at 5,200 yards. From the tips the 7,200-yard layout is a quality test of ability and course management for even the most accomplished player. The Quail Run Golf Course is open to the public with a very accessible tee time policy (7 days in advance).

Elks Country Club Golf Course is a traditional tree-lined private course,

and is well known for its manicured course conditions. The club has hosted the Nebraska Open since 1993, which has become the second largest annual golf tournament in Nebraska. The club also offers a full practice facility including: driving range, chipping, and putting greens; full sized and kids pool; lounges; full restaurant; and pro shop. The Elks Country Club also offers a full food-service banquet room with seating for up to 250 people for hosting events and receptions. Numerous membership options with amenities are available for the whole family.

Loup Public Power District's five parks and recreation areas include 77 acres of land and 1,100 acres of water. More than 150,000 people visit every year.

The parks were originally developed as a byproduct of the Loup's canal system. Over the years, the District continued to

of Columbus. Both have electrical hook-ups and primitive camping, picnicking, and playground equipment. Electrical hookups are free, although visitors are limited to seven days of camping per 30-day period. Visitors to Lake North are also able to boat, water-ski, fish, and swim.

The parks are an ideal spot for bird watching during the fall and spring migrations. The scenic Two Lakes Trail, Robert White Trails, and Bob Lake Trails offer an opportunity for nature walks or bike rides.

Powerhouse Park features an impressive view of the Columbus Powerhouse. Visitors can grill, picnic, and fish. A limited number of primitive camping spots are available.

Trailrace Park is located at the junction of the Loup Canal and Platte River

Loup Public Power District Parks										
POWERHOUSE PARK 3 mi N of US30 & 3rd Ave in Columbus	•		•				•		•	
TAILRACE PARK 3.5 mi E of 8th St & 18th Ave in Columbus, & 1.5 mi S	•								•	
HEADWORKS PARK 6 mi W of Genoa on Hwy 22	•	•	•	•	•	•	•	•	•	•
LOUP PARK 4 mi N of US30 & 18th Ave in Columbus, then 1.5 mi W	•	•	•	•	•	•	•	•	•	
LAKE NORTH 4 mi N of US30 & 18th Ave in Columbus	•	•	•	•	•	•	•	•	•	•

develop and maintain them as a service to the communities and the customers it serves.

The parks are open from May 1 through November 1, weather permitting. Each park features water and picnic areas.

There are plenty of recreational opportunities at all five parks. Visitors can boat, swim, camp, fish, bike, and more. For more information, visit loup.com or call 402-562-5709 for park status.

Lake North and Loup Park/Lake Babcock are located just north

southeast of Columbus and has a beautiful view. Visitors can fish or use the playground equipment. Motor vehicle access is not allowed, so visitors must enter on foot. A limited number of primitive camping sites are available.

Headworks Park, located at the start of the Loup Canal west of Genoa, offers both electrical hook-ups and primitive camping spots. Visitors can also swim, fish, and take nature walks along the canal road. The park is also a great spot to view bird migrations during the spring and fall.



Castner's Crossing

Columbus Area Recreational Trails (CART)

Columbus has an extensive system of recreational trails throughout the city and adjoining areas. Columbus Area Recreational Trails provides coordination of funding and the maintenance of a master plan of development for these trails. CART continues to work on new trails in and around the Columbus area.

These trails provide local residents and visitors a safe setting for the healthy activities of hiking, biking, running, and roller blading. All trails are open to the public at no charge.

Two Lakes Trail (2.4 miles long, 8 ft. wide concrete)—This trail offers recreational opportunities for bike riders, runners, walkers, roller bladers, nature enthusiasts, bird watchers, and wheelchairs. The scenic trail starts at the trailhead on the north side of Lake North and runs along the north side of two lakes (Lake North and Lake Babcock) and winds through the tree lined Lake North Park, Loup Park, and a wildlife refuge along 83rd Street between 18th Avenue and 48th Avenue.

Castner's Crossing (130 ft. long, 10 ft. wide footbridge)—Castner's Crossing footbridge crosses the Loup Canal and connects the Two Lakes Trail and the Bob Lake Trail. A trailhead and information kiosk are located at the crossing.

Bob Lake Trail (1.3 miles long, 9 ft. wide crushed limestone)—For biking, walking, and jogging, the Bob Lake Trail follows the southwest perimeter of Lake Babcock. A trailhead is located at the junction of Bob Lake Trail and the Robert White Trail, which is across the street from the east entrance of Central Community College.

Robert White Trail (1.5 miles long, 9 ft. wide crushed limestone)—Great for biking, walking, and jogging, the Robert White Trail follows the southern perimeter of Lake Babcock from the Bob Lake Trail to 18th Avenue. Parking is available at the east and west ends of the trail.

Monastery Trail (1.5 miles long, 10 ft. wide concrete)—The Monastery Trail runs parallel to 18th Avenue (otherwise known as Monastery Road) and connects the Robert White Trail with the Wilderness Park Trail.

Wilderness Park Trail (1.5 miles long, 10 ft. wide concrete)—All ages can walk, jog, bike, and rollerblade on the trail around the perimeter of the Wilderness Park Soccer Complex.

Pawnee Park Trail (2.0 miles long, 10 ft. wide concrete)—invites all ages to walk, jog, bike, and rollerblade along the winding path through the beautiful Pawnee Park along the Loup River.

8th Street Trail (1,178 feet long, 6 ft. wide concrete) —runs from the northwest entrance of Pawnee Park past Van Berg public golf course to the entrance of the Stires Lake and Wagners Lake residential areas.

3rd Avenue Viaduct Trail (0.8 miles long, 10 ft. wide concrete)—runs parallel to 3rd Avenue from 8th Street, up and over the railroad tracks on the viaduct and to 19th Street.

Sunset Trail (1.3 miles long, 10 ft. wide concrete)—loops around Lake Esther east of Columbus Community Hospital and west of Columbus Wellness Center. Sunset Trail connects to Discoverer Trail.

Discoverer Trail (1.1 miles long, 10 ft. wide concrete) —runs from Lake Esther south along 41st Avenue to 38th Street, then east along the north side of 38th Street to 33rd Avenue. It continues north on the west side of 33rd Avenue, past Columbus High School, toward Lost Creek Parkway where it connects to Lost Creek Trail.

Lost Creek Trail West (1 mile long, 10 ft. wide concrete) runs along the north side of Lost Creek Parkway connecting the Discoverer Trail with Wilderness Park Trail.

Power House Park Trail (1 mile long, 10 ft. wide concrete) recently completed and helps further connecting the entire Columbus trail system, reaching to the Power House Park north of Columbus.

Columbus Senior Center

provides a place that older adults can congregate to fulfill many of their social, physical, emotional and intellectual needs. One of the most important things seniors can do to remain happy and healthy long term is to engage with others on a regular basis. The busier seniors are, the more they enjoy a higher quality of life.

Recognized by the Older Americans Act, senior centers have become one of the most widely used services among America's older adults. For the seniors in our community that are looking for something to do to stay busy or those who want to meet new people, the Senior Center is the perfect place for that. It provides an opportunity to connect with others who are around the same age while offering them something new to learn. The Center offers a multitude of programs:

- Meals (Home Delivered, Curb-Side and Congregate)
- Nutrition education programs
- Health, fitness and wellness programs (FROG - Fitness Reaching Older Generations) and Line Dancing
- Public benefits counseling (SHIIP, Legal Aid, Tax programs, USDA Farmer's Market Voucher Distribution and Financial Counseling)
- Employment Assistance
- Volunteer opportunities
- Social and recreational activities
- Educational and arts programs
- Intergenerational programs
- Health clinics (toe nail, blood pressure and hearing)
- Information and assistance
- Entertainment (Musical, BINGO, Movies/popcorn & soda, puzzles, billiards, cards, board games)
- Computer Lab



Rendering of the Harrah's Columbus NE Racing & Casino

The **Platte County Historical Museum** consists of three buildings with historical displays of artifacts and photos depicting life in Platte County through the years. The museum is open Monday through Friday from 8:30 a.m. to 1:30 p.m. year round (except holidays). From May through September, the museum is also open Saturdays and Sundays from 1:00 - 4:00 p.m. (except holidays). Visit pchsne.org for more information.

Platte Valley Playhouse is a 100% volunteer organization presenting two performances each year. For more information, visit pvphcolumbus.org.

Platte County Fair exhibits materials and foods from schools, children, and adults; showmanship of animals and poultry; a midway; and entertainment. Visit agpark.com for more information.

Friends of Music presents musical programs during fall, winter, and spring months at Columbus Middle School Nantkes Performing Art Center and the Columbus High School Concert Hall. For more information, visit concertassociation.net/columbusne.

Columbus Races run for 11 days each year with year-round simulcasting of races of pari-mutuel thoroughbred horses.

Harrah's Columbus, NE Racing & Casino, is being built in partnership with Columbus Exposition and Racing and will offer the longest thoroughbred racetrack in the state. It is expected to feature a 28,000-square-foot casino and sportsbook with more than 500 slot machines and 14 table games. The property is expected to be complete in the first half of 2024. Caesars Entertainment opened the Columbus Casino, a temporary gaming facility at Ag Park in the spring of 2023 while construction is underway on the permanent facility. Harrah's Columbus NE and Columbus Casino are also part of Caesars Entertainment's expansive Caesars Rewards® network.

Columbus Fieldhouse, Columbus Community Hospital (CCH) is constructing a solid foundation for our community's health and wellness. The 260,000 square foot sports complex/fieldhouse will integrate fitness, wellness,

rehabilitation services and childcare, all under one roof. The facility will include a 101,500 square-foot field turf area, batting cages, running track, mini putting greens, tennis, pickleball, basketball and volleyball courts.

The plans for the fieldhouse also include racquetball, a cycle studio and spaces for personalized fitness, circuit training and cardio, golf simulators, batting cage and additional areas for an array of competitive sports.

It will provide important economic benefits to the community as the hospital plans to attract a variety of regional sports tournaments to the facility. The expected opening of the fieldhouse is in 2024.



Bell Tower



Frankfort Square Bandstand



Historic Glur's Tavern, Nebraska's Oldest Tavern



Live Horse Racing



Platte County Courthouse



Bike Share

EVENTS

Easter Egg Hunt • Spring

Farmer's Market • May-October
Fresh vegetables and fruit, crafts and baked items

Columbus Horse Racing Circuit • Summer/Fall

National Day of Prayer • May
One day event encouraging citizens to pray for our nation

Dirt Track Auto Racing • April-September
At the US30 Speedway

Summer Concert Series • June-July
Every Saturday in Frankfort Square

Summer Movies in the Park • June-July
Every Friday in Frankfort Square

Lawnchairs on the Square • June-August
Concerts in Frankfort Square

Red, White, KaBoom • July
Independence Day fireworks display

Platte County Fair • July
Annual county fair featuring 4-H exhibits, midway show, and entertainment

Power & Progress Festival • Summer
Bands and food festival

Bob Lauterbach Memorial Downtown Runaround • Summer
Runners and walkers of all ages competing in races

Columbus Days • August
Music, dancing, bar-b-que, parade and many other fun activities

High School Band Marching Festival • October
More than 20 high school bands from various communities compete

Taste of Columbus • October
Local food vendors and distributors and silent auction

Downtown Trick or Treat • October

Downtown Christmas Shopping Event • November

Santa's Arrival • November



Housing

New Construction

Two hundred and thirty new homes were constructed in the past three years and it is estimated 52 homes will be built in 2023. The cost of supplies and delays in receiving product could impact the construction of homes in 2023. High interest rates can also impact the cost of construction. The cost of new home construction averages \$275 per square foot.



New home construction

Rental Housing

The Chamber of Commerce provides an extensive list of most of the landlords with rentals in Columbus.

Low Cost/Retirement Housing

The Columbus Housing Authority, owned by the city of Columbus, manages the Columbus area Section 8 Voucher Assistance. The operation is in cooperation with the U.S. Department of Housing and Urban Development.

Facility	Capacity
Arbor Place	24
Briarwood Apartments	16
Columbian Village	62
Columbus Place Apartments.....	60
Crown Villa	60
Four Seasons.....	24
FRC Housing LLC.....	34
Heritage House.....	84
Jackson Meadows.....	22
Jones North Creek Apartments	44
Oakwood Apartments	24
Project Lift (ADA)	8
Realife.....	32
Village Apartments	24
Westport Congregate Housing for Elderly.....	26
Westwood Apartments.....	16

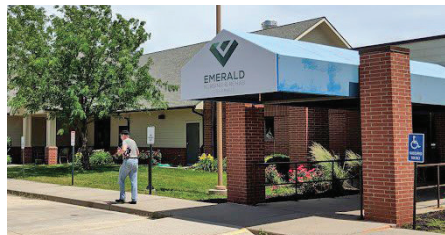
Nursing Homes



Brookestone Acres: Skilled nursing care and short-term rehabilitation with four, 20-bed resident households.



Edgewood Vista: Memory care assisted living with 12 beds.



Emerald Nursing & Rehabilitation Columbus: Assisted living/skilled nursing/Alzheimer & dementia care/rehabilitation with 145 beds.

Independent & Assisted Living



Cottonwood Place: Independent through extended care assisted living with 39 beds.



Heritage Meridian Gardens: Licensed assisted living with 67 apartments and 16 memory support apartments.



Prairie Village Retirement Center: 45 assisted and 35 independent apartments.

Climate

Four Distinct Seasons

Nebraska has a continental climate, with hot summers and cold winters. Temperatures are highly variable from season to season and year to year. The majority of the state has an average annual maximum temperature of 60°F to 65°F with average annual minimum temperatures in the 30°F to 40°F range. State temperature records are -47°F and 118°F. The average number of days in excess of 100°F range from 5 (northeast) to 11 (southwest) with most of the state between 6 and 9 days. Minimum temperatures below zero occur on average 7 days per year in southeast Nebraska to 20 days in north-central Nebraska.

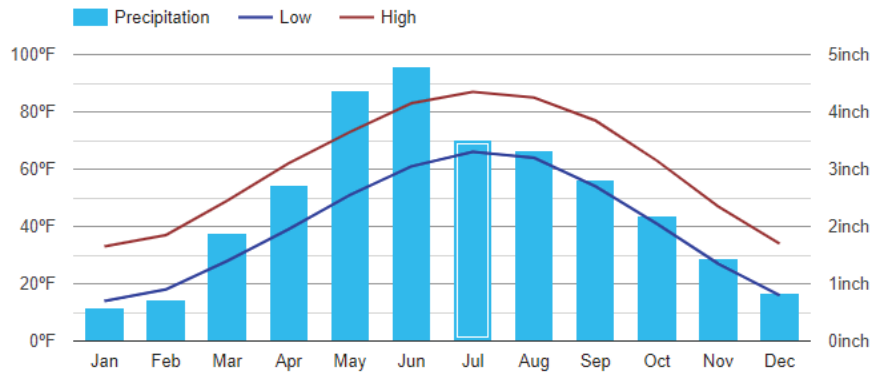
Precipitation

Precipitation is also variable and ranges from an annual average of 15 to 20 inches in the west to 30 to 35 inches in southeast Nebraska. Approximately 75 percent of the precipitation falls as rain from April to September. Annual average snowfall ranges from 20 inches in the southeast to 50 inches in the northwest. Snowfall usually increases during late winter and reaches a maximum in March.

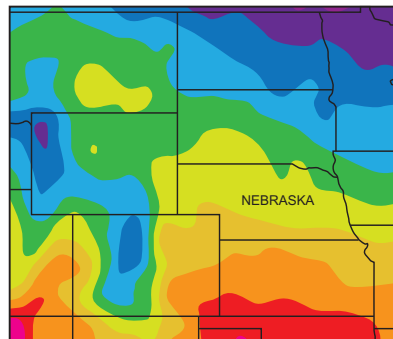
Growing Season

The growing season fluctuates in length, but on average it ranges from 120 days in the extreme northwest to 170 days in the southeast. The average date of the last freeze in spring varies from April 25 in extreme southeast Nebraska to May 21 in extreme northwest. The first fall freeze typically occurs from September 20 in the extreme northwest to October 6 in the southeast part of the state.

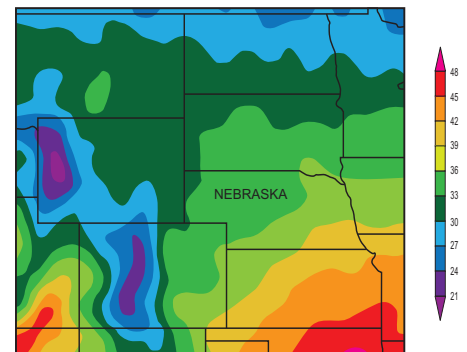
Columbus Climate Graph - Nebraska Climate Chart



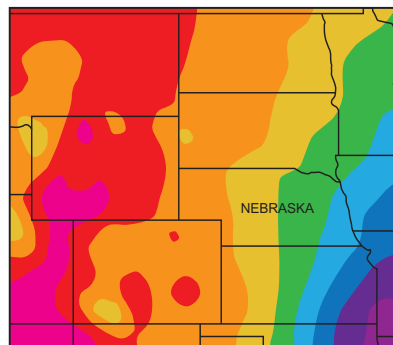
Annual Maximum Temperature (F)



Annual Minimum Temperature (F)



Annual Precipitation (inches)



Based on 30-year climate normals 1981-2010 data from the High Plains Climate Center, University of Nebraska-Lincoln

Source: hprcc.unl.edu



Nebraska's Rank Among States

1ST Commercial Cattle Slaughter, 2021
 Great Northern Bean Production, 2022
 Cash receipts per capita, 2021
 All cattle on feed, Jan. 1, 2023
 Popcorn Production, 2021

2ND Beef and Veal exports, 2022
 All cattle and calves, Jan. 1, 2023
 Commercial red meat production, 2021
 Pinto bean production, 2022
 Proso millet production, 2022
 Bison, 2017

3RD Corn Exports, 2021
 Cash Receipts from All Farm Commodities, 2021
 Cash receipts from all livestock and products, 2021
 Light red kidney bean production, 2022

4TH Beef Cows, Jan. 1, 2023
 Cash receipts from all crops, 2021
 Total animal products exports, 2021
 Cash receipts from all crops, 2020
 Corn for grain production, 2022
 All dry edible bean production, 2022
 Dry edible pea production, 2022
 Land in Farms and Ranches, 2021

5TH Soybean Exports, 2021
 Agricultural exports, 2021
 Sunflower production, 2022
 Harvested Acres of Principal Crops, 2021
 Grain sorghum production, 2022

6TH Commercial hog slaughter, 2021
 All hogs and pigs on farms, Dec. 1, 2022
 Soybean production, 2022
 Dry edible pea production, 2022
 Sugar beet production, 2022

Source: Nebraska Department of Agriculture - USDA, NASS, NFO, and NBA

Agriculture

In 2021, Nebraska ranked first among the states in commercial cattle slaughter and popcorn production; second in beef and veal exports and commercial red meat production; third in corn exports and cash receipts from all farm commodities.

Nebraska ranks fifth among all states for total agricultural exports, with more than \$9 billion in exports. Platte County led Nebraska counties with \$229.6 million in exports in 2021.

Nebraska's farms and ranches utilized 44.8 million acres or 92 percent of the state's total land area. Cash receipts from farm markets in 2021 contributed more than \$26.0 billion to the state's economy and 6.1 percent of the U.S. total. Food processing is the state's largest manufacturing sector and foreign markets are important for many of the state's manufacturers.

Sources: Nebraska Agriculture Rankings - USDA ERS, USDA, NASS; Food Processing Status - Bureau of Labor Statistics, Quarterly Census of Employment and Wages

PRODUCTION OF LEADING CROPS

5 year average - 2017-2021

	PLATTE COUNTY	NEBRASKA
CORN FOR GRAIN bushels	39,286,200	1,777,832,000
SOYBEANS bushels	7,850,600	316,715,000

Source: United States Department of Agriculture, National Agricultural Statistics Service

AVERAGE LIVESTOCK POPULATION

5 year average - 2017-2021

	PLATTE COUNTY	NEBRASKA
ALL CATTLE	138,000	6,730,000

Source: United States Department of Agriculture, National Agricultural Statistics Service

Nebraska Agricultural Facts

Nebraska has approximately 44,800 farms and ranches.

The average size of a Nebraska farm/ranch was 1,000 acres.

One in four jobs in Nebraska are related to agriculture.

In 2022, Nebraska ranked No. 2 in ethanol production for a clean, reliable and renewable fuel source.

With approximately 25 operating ethanol plants utilizing the state's abundance of corn as the main feedstock, Nebraska produces more than 2 billion gallons of renewable fuel annually.

Distillers' grains, a co-product of ethanol production, is important as both a domestic livestock feed ingredient and as a foreign export product.

The linkage between corn, ethanol and livestock production has become known as Nebraska's "Golden Triangle."

A total 95% of farms in Nebraska are family owned (2017, USDA Census of Agriculture). Known for a hard-work ethic and a strong set of values, these families continue to produce the highest quality food products that help feed the world.

Nebraska farmers and ranchers are innovators, using precision agriculture, genetic advances in crops and livestock and modern equipment and methods to produce more using less resources.



The Ogallala Aquifer spans 174,000 miles, with approximately 65% of its water located in Nebraska.

Surface Water

Nebraska's surface water resources are surprisingly extensive, including approximately 18,000 miles of continuously flowing rivers and streams and about 430 square miles of lakes.

Surface water is predominantly used by grazing livestock as its source drinking water.

Groundwater

One of Nebraska's most vital natural resources is its massive supply of groundwater. The High Plains Aquifer, also commonly referred to as the Ogallala Aquifer, stretches through parts of eight states, but its most abundant water resource is located in nearly two-thirds of Nebraska. This groundwater availability has been essential to the success of agriculture in the state.

Center pivot irrigation is the most common method of providing water to

row crops in the state, and as a result, four of the largest manufacturers of center pivot systems in the world are located in Nebraska. Nebraska has more than 100,000 registered irrigation wells.

With the implementation of more efficient irrigation systems and other water management measures, the Ogallala Aquifer will remain a valuable resource in Nebraska.

An accessible water supply also is vital to Nebraska's livestock and dairy production.

The Nebraska Department of Natural Resources maintains responsibility for administration of surface water rights. In locations where groundwater and surface water are connected, the responsibility is shared among the NRDs and the state for achieving a sustainable balance between water supplies and water use.



Nebraska Public Power District (NPPD), Nebraska's largest electric utility, assists in economic development for the areas it serves. For more information on NPPD's economic development assistance, contact Economic Development Department, 1414 15th Street, PO Box 499, Columbus, Nebraska 68602-0499, (877) 275-6773, Ext. 5534, email: econdev@nppd.com, or visit our website at [sites.nppd.com](https://www.nppd.com).

© Nebraska Public Power District, August 2023

fb889679



Nebraska Public Power District

[nppd.com](https://www.nppd.com)